



Pennsylvania Trout Habitat Improvement: Philosophy & Design

by

Karl J. Lutz

PA Fish & Boat
Commission





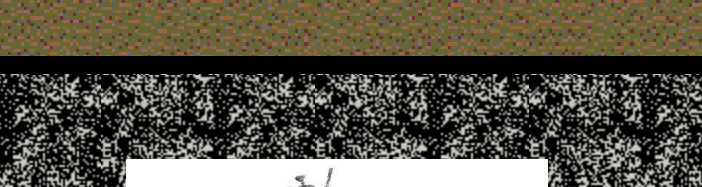
Trout

Habitat

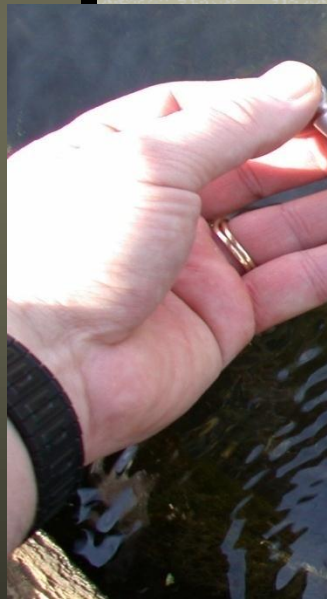
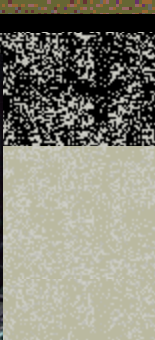
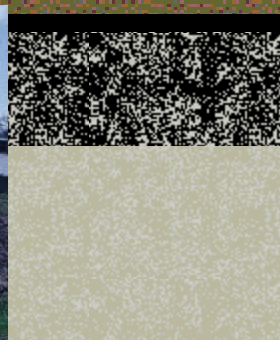
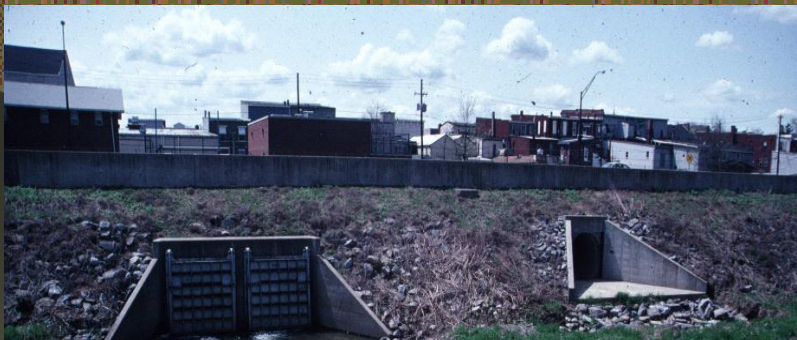
Improvement



















































Fish habitat improvement structures are required to be permitted by DEP and the USACOE.

PERMITS: General Permit – 1 “Fish Enhancement Structures”



**US Army Corps
of Engineers**





Cooperative Habitat Improvement Program (CHIP) and Technical Assistance Program (TAP) Services

CHIP

- PFBC staff designs project, obtains all permits, and assists in construction and placement of habitat treatments with cooperator
- PFBC contributes up to \$3,000 per project
- Only eligible for properties open to the public with signed agreement

TAP

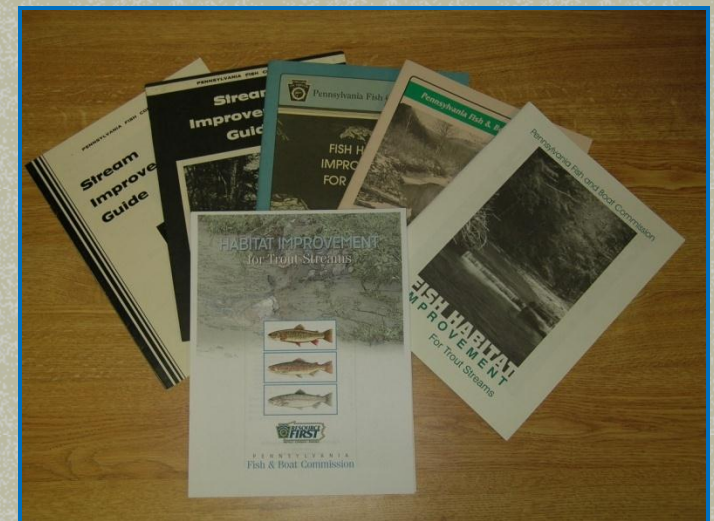
- PFBC staff provides limited technical assistance, mostly related to project design and construction oversight
- PFBC does not contribute financially to the project
- Public access is not a requirement



More Information:

PFBC Habitat Webpage:

<http://fishandboat.com/habitat.htm>



Lt. Lehigh Creek - Case Study

- Heavily pastured stream
- Stream bank erosion
- Limited fish cover
- Poor riparian buffer
- Wild brown trout population nearby

Measureable Goals: Increase numbers and year classes of wild brown trout, Increase habitat assessment scores

Partners: Pa. Fish & Boat Commission, Wildlands Conservancy, US Fish & Wildlife Service, Trout Unlimited, Ducks Unlimited, NRCS, Delaware River Keeper Network, Berks & Lehigh Co. Conservation Districts, City of Allentown, Berks Conservancy

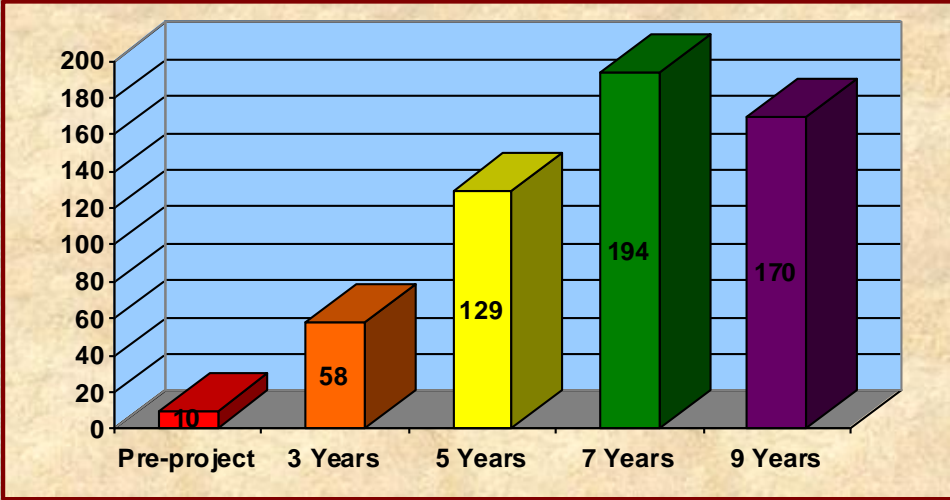






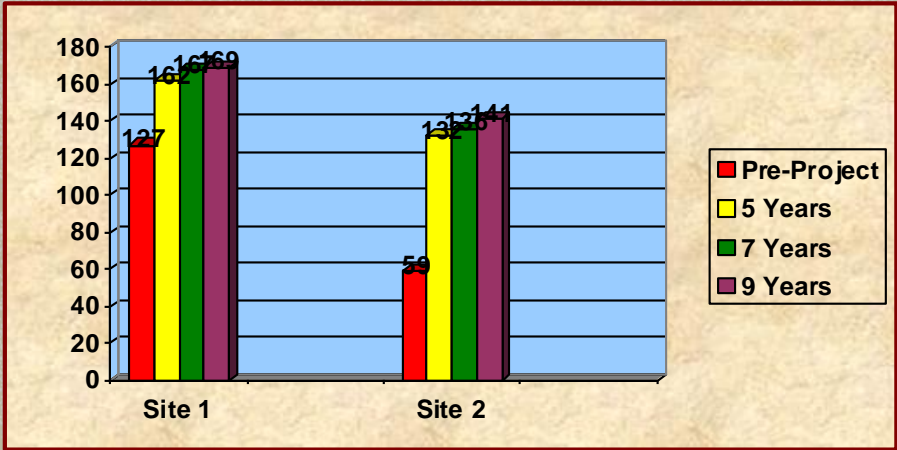
Total Wild Brown Trout

(Sites 1 and 2 Combined)



Total Habitat Assessment Score

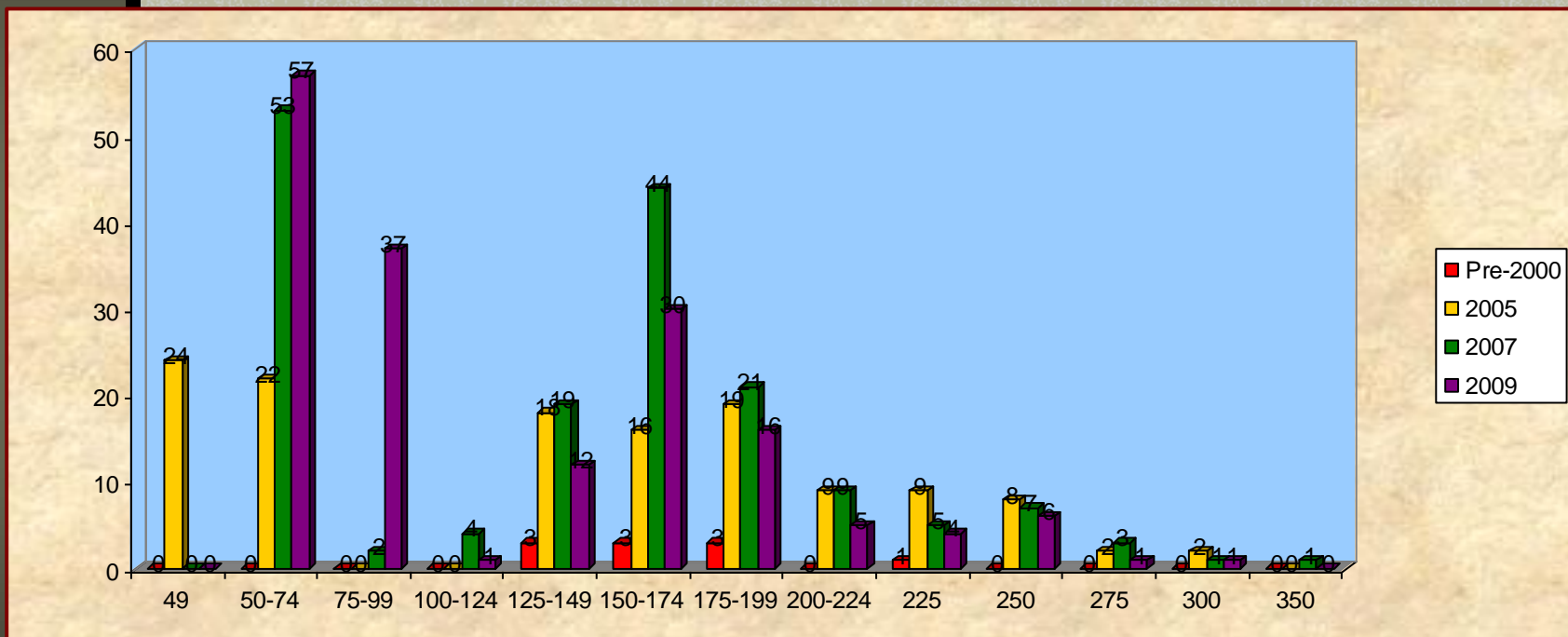
(Maximum Score =200)





Size Class Catch

Pre-Project vs. 5, 7 & 9-Year Survey



2000



Site 1

2005



2007



2009







2000



2005



2009

Pre-Project



2000



2005



2009





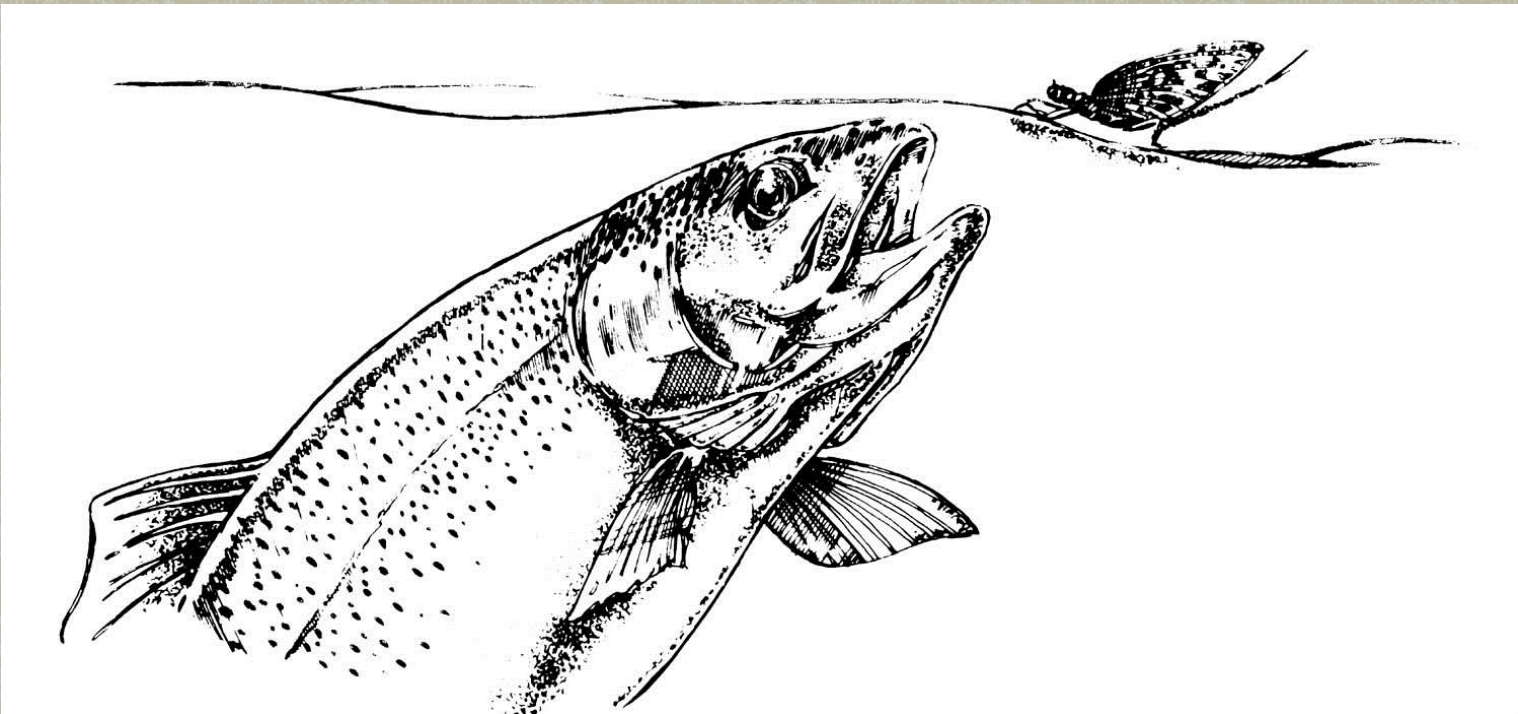
2005



2007







**PENNSYLVANIA
FISH & BOAT COMMISSION**

**RESOURCE
FIRST**

PROTECT • CONSERVE • ENHANCE